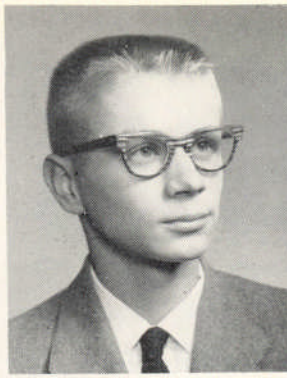


Linnerson, John

*Agriculture*

Bowling 1, 2, 3  
F. F. A. 1, 2, 3, 4



Lyon, Thomas W.

*College Prep*

Track 3, 4  
Ski Club 2  
Jets Club 4  
Bible Club 1, 2, 3, 4

Logsdon, Sharon S.

*College Prep*

Pines 3, 4  
Pines Editor 4  
Watchbird 1  
Junior Class Play  
Play Committee 4  
Superintendent Council 4  
Government Day Committee 4  
National Honor Society 3, 4  
Quill and Scroll 3, 4  
Formal Committee 3, 4  
Pep Club 1, 2, 3, 4  
G. A. A. 2  
Ski Club 2, 3, 4



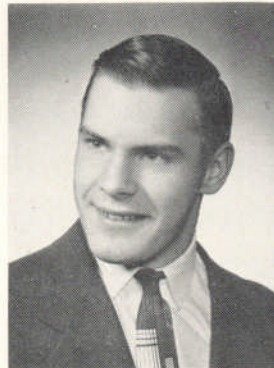
McCall, Sharon

*Commercial*

Junior Class Play  
Glee Club 1  
Red Cross Delegate 3  
F. H. A. 1  
Bowling 2, 3  
Modern Dance 1, 2, 3  
Pep Club 2, 3

Luhrs, Brian A.

*General*



McCool, Mary Jane

*College Prep*

Watchbird 1  
Play Committee 3, 4  
Student Council 1  
Government Day Committee 4  
National Honor Society 3, 4  
Scholastic Honor Pins 1, 2, 3  
Formal Committee 3, 4  
Ski Club 2, 3, 4  
Ski Club Secretary 4  
Bowling 3, 4  
Bowling Secretary 3, 4  
Pep Club 1, 2, 3, 4  
Ski Club Council 1, 4  
AFS Committee 4

Luhrs, Charles J.

*College Prep*

Ski Club 3, 4  
Jets Club 3



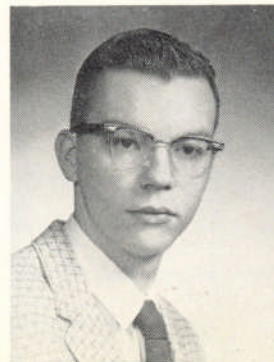
McCoy, Jack S.

*College Prep*

Junior Class Play  
Student Council 1  
Government Day Committee 4  
Football 1, 2, 3  
Baseball 3, 4  
Golf 2  
Intramural 2, 3, 4  
Formal Committee 3, 4  
Spanish Club 3  
Latin Club 1  
Varsity Club 3, 4

Lutz, Doug

*College Prep*



McCuen, Marlene Kaye

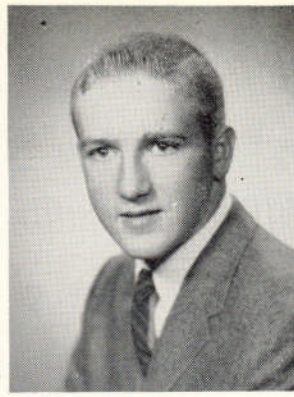
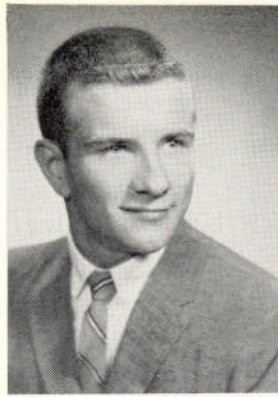
*Commercial*

Play Committee 4  
Choir 2, 3, 4  
Glee Club 1  
Operetta 3, 4  
Pep Club 1, 3

**McGregor, Brian James**

*College Prep*

School Governor 4  
Junior Vice-President  
Student Council 3, 4  
Superintendent Council 4  
Government Day Committee 4  
Track 1  
Hi-Y 3, 4  
Hi-Y Chaplain 3  
Ski Club 4  
A. S. A. C. 4



**Martin, Jim**

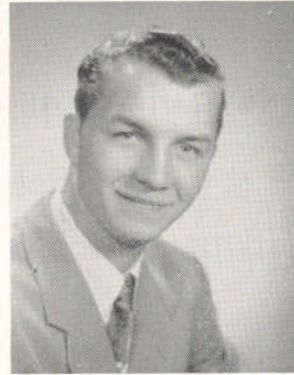
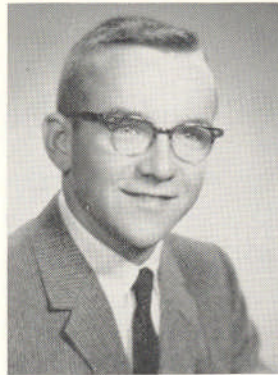
*College Prep*

Football 1, 2  
Intramural 1, 2, 3, 4  
Ski Club 2, 4

**McGregor, Douglas R.**

*College Prep*

Senior Vice-President  
Student Council 4  
Formal Committee 4  
Hi-Y 3, 4  
Hi-Y Vice-President 4



**Martin, Vern**

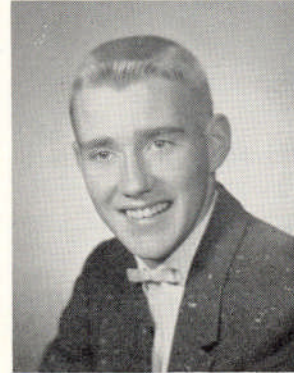
*General*

Intramural 3

**McKinley, Judith E.**

*College Prep*

Play Committee 3, 4  
Orchestra 1  
Government Day Committee 4  
Freshman Cheerleader  
JoyVee Cheerleader  
Varsity Cheerleader 3, 4  
National Honor Society 4  
Pep Club Council 4  
Scholastic Honor Pins 2  
Formal Committee 3  
Pep Club 1, 2, 3, 4  
Ski Club 2, 3  
French Club 4



**Martinek, Bill**

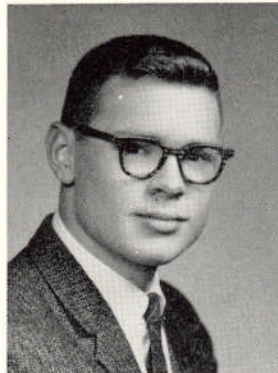
*College Prep*

Band 1, 2, 3  
Pep Band 2, 3  
Football 1  
Jets Club 2, 3, 4  
Hi-Y 4

**Mann, W. A.**

*College Prep*

Student Council 3  
Football 1, 2, 3, 4  
Track 1, 2, 3, 4  
Intramural 1, 2, 4  
Varsity Club 2, 3, 4  
Varsity Club Treasurer 4



**Martinson, Suzanne**

*College Prep*

Challenger 3  
Watchbird 1  
Junior Class Play  
Choir 2, 3, 4  
Madrigals 2  
Operetta 3, 4  
Glee Club 1  
Student Council 4  
Bogi Council 3  
Formal Committee 3, 4  
Pep Club 1, 2, 3, 4  
Ski Club 2, 3, 4  
Bible Club 2, 3  
A. F. S. Committee 4  
A. F. S. Secretary 4

**Mannor, Jean**

*Commercial*

Junior Class Play  
Formal Committee 3, 4  
Pep Club 2, 3, 4



**Mathews, Deanne**

*College Prep*

Challenger 2  
Play Committee 3  
Red Cross Delegate 2  
Formal Committee 4  
Bowling 2, 4  
G. A. A. 2  
Girls Rifle Club 3

**Mathison, Linda Lou**

*College Prep*

- Watchbird 1
- Band 1, 2, 4
- Orchestra 1, 2, 3, 4
- Choir 4
- Operetta 4
- National Honor Society 3, 4
- Scholastic Honor Pins 1, 2
- Jets Club 4
- Bowling 2
- Choir Accompanist 4
- Choir Council 4
- District Solo and Ensemble Festival 1, 2, 3, 4
- State Solo and Ensemble Festival 1, 2, 3, 4



**Mead, Susan Elizabeth**

*College Prep*

- Transferred from Iwakuni, Japan
- Formal Committee 4
- Pep Club 4
- Ski Club 4



**Mericle, Lucy Ann**

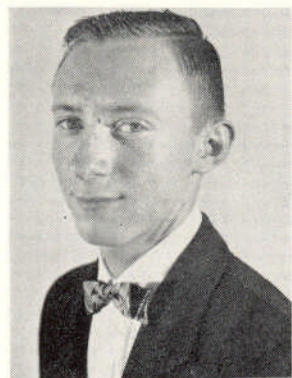
*College Prep*

- Pines 4
- Band 1, 2, 3
- Orchestra 2, 3
- National Honor Society 3, 4
- National Honor Society Secretary 4
- Scholastic Honor Pins 1, 2, 3
- Band Council 2, 3
- Jets Club 4
- Quill and Scroll 4



**Miller, John William**

*College Prep*



**Montague, Gertrude Ellen**

*College Prep*

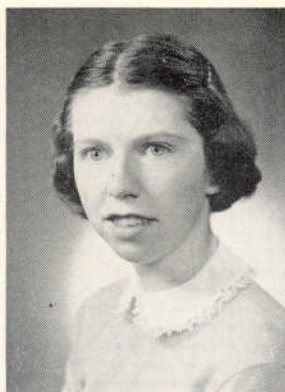
- Play Committee 4
- Glee Club 1
- Red Cross Delegate 1
- Formal Committee 3, 4
- Pep Club 3, 4
- Ski Club 1, 2, 3, 4
- F. T. A. 3



**Moran, Carolyn**

*College Prep*

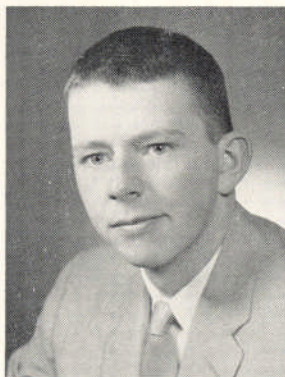
- Band 1, 2
- Scholastic Honor Pins 3
- Jets Club 3, 4



**Moran, Tom**

*Agriculture*

- Superintendent Council 3, 4
- F. F. A. 1, 2, 3, 4
- F. F. A. President 3, 4



**Morrison, Karen G.**

*Commercial*



**Moutsatson, Jan**

*College Prep*

- Transferred from Midland
- Play Committee 3
- Student Council 4
- Government Day Committee 4
- Formal Committee 3, 4
- Pep Club 3, 4
- Ski Club 3, 4
- Bowling 3, 4
- Bowling President 3
- Forensics 4



**Moyer, Robert G.**

*College Prep*

- Student Council 4
- Bogi Council 3
- Football 1, 2, 3, 4
- Track 1, 2, 3, 4
- Varsity Club 3, 4
- Varsity Club Secretary 4
- Varsity Club Choir 4

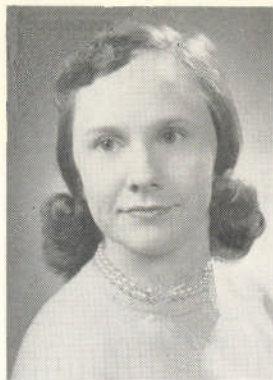


Deceased

Nash, Kay Ann

*Commercial*

- Orchestra 1, 2, 3
- Bogi Council 3
- Red Cross Delegate 4
- F. H. A. 2, 3
- F. H. A. President 2
- F. H. A. Vice-President 3
- Pep Club 2



Neuman, Jay L.

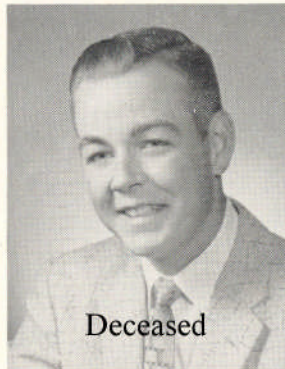
*College Prep*

- Junior Class Play
- Glee Club 1
- Bogi Council 4
- Football 1
- Basketball 1, 2
- Baseball 3
- Intramural 3, 4
- Formal Committee 3, 4

Neihardt, Cynthia J.

*College Prep*

- Play Committee 3
- Band 1, 2, 3, 4
- Red Cross Delegate 1
- Formal Committee 3, 4
- Band Council 4
- Modern Dance 4
- Pep Club 1, 2
- Ski Club 2, 3, 4



Deceased

Newkirk, Thomas L.

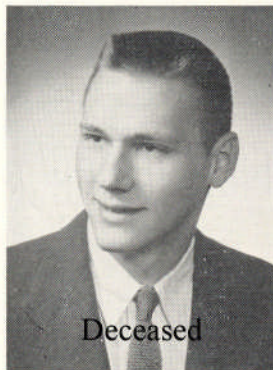
*General*

- Transferred from Mancelona
- Glee Club 2

Nelson, Robert D.

*College Prep*

- Intramural 1, 2, 3, 4



Deceased



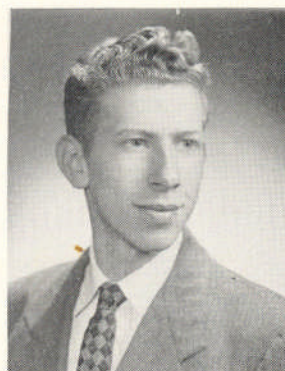
Nicholson, Karen E.

*Commercial*

- Play Committee 3, 4
- Government Day Committee 4
- Formal Committee 3, 4
- Pep Club 1, 2, 3, 4

Nelson, Sandra

*General*



Norcross, Carl E.

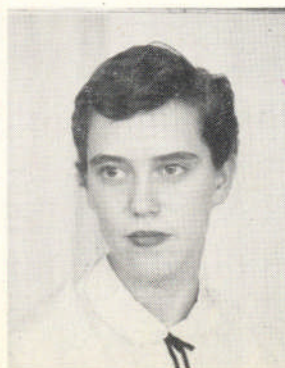
*General*

- Junior Class Play

Neufer, Beverly

*Commercial*

- Transferred from Portland, Oregon
- Red Cross Delegate 4
- Pep Club 4



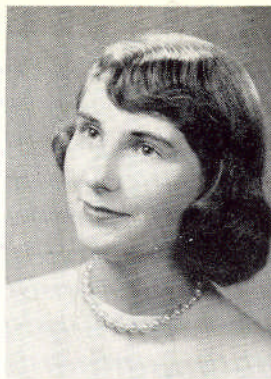
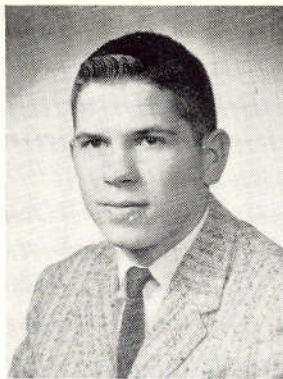
Norris, Loren L.

*Commercial*

**Oatley, Richard**

*College Prep*

- Football 3, 4
- Track 3
- Intramural 4
- Formal Committee 3
- Varsity Club 3, 4
- Hi-Y 4



**Perkett, Sara Jane**

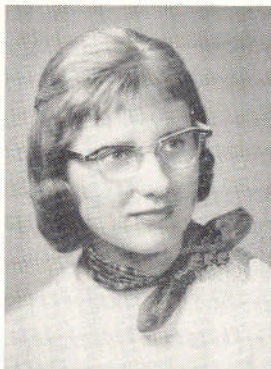
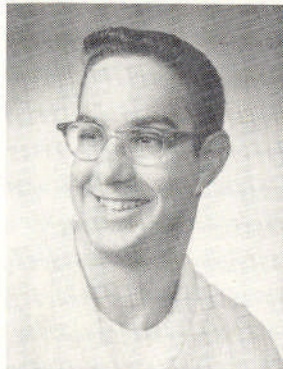
*College Prep*

- Pines 3, 4
- Black and Gold 2, 3, 4
- Black and Gold Editor 4
- Watchbird Editor 1
- Play Committee 3
- Junior Secretary
- Student Council 3, 4
- Superintendent Council 4
- Superintendent Council Secretary 4
- National Honor Society 3, 4
- National Honor Society Vice-President 4
- Foreign Exchange Student 3
- Scholastic Honor Pins 1, 3
- Formal Committee 3, 4
- Jets Club 3, 4
- Jets Club Secretary
- AFS Committee Chairman 4
- Ski Club 2, 3, 4

**Oliver, Monty J.**

*College Prep*

- Track 1, 2, 3, 4
- Varsity Club 3, 4



**Perla, Marilyn**

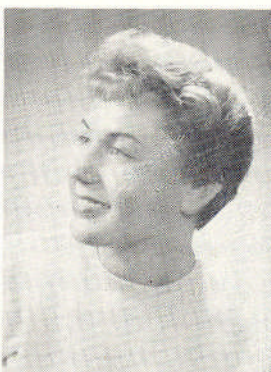
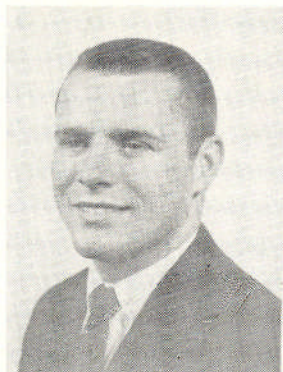
*College Prep*

- Play Committee 3 4
- Band 1
- Choir 2, 3, 4
- Orchestra 3, 4
- Glee Club 1
- Scholastic Honor Pins 1
- Formal Committee 3, 4
- Pep Club 1, 2, 3, 4
- Bible Club Secretary 3

**Parker, Donald C.**

*General*

- Red Cross Delegate 1
- Football 4
- Basketball 4
- Intramural 2, 3
- Machine Shop Club 4
- Print Shop Club Secretary 2
- Varsity Club 4
- Tumbling 1, 2, 3, 4
- Basketball Manager 4
- Football Manager 4



**Perrin, Julie Ann**

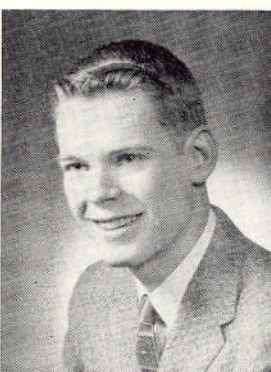
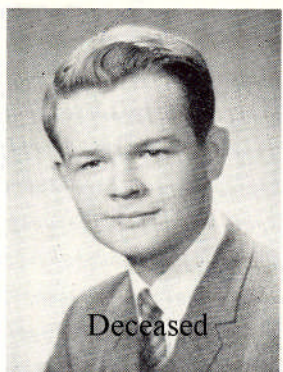
*Commercial*

- Challenger 2, 3
- Play Committee 4
- Debate 4
- Choir 2, 3, 4
- Operetta 3, 4
- Glee Club 1
- Formal Committee 1
- Choir Council 4
- Pep Club 3

**Parsons, Carl Alexander**

*College Prep*

- Black and Gold 2, 3, 4
- Challenger 2, 3
- Challenger Editor 3
- Junior Class Play
- Debate 2
- Government Day Committee 4
- Quill and Scroll 3, 4
- French Club 1, 2
- State Driver Ed. Champion 3



**Perszyk, Tony J.**

*General*

- Transferred from St. Francis
- Machine Shop. Club 4

**Faynter, Ann**

*College Prep*

- Challenger 3
- Watchbird 1
- Junior Class Play
- Play Committee 4
- Freshman Cheerleader
- Scholastic Honor Pins 1, 3
- Formal Committee 3, 4
- Pep Club 1, 2, 3, 4



**Peters, Wilfred G.**

*General*